

**CASE**  
CONSTRUCTION

# CX C-SERIES HYDRAULIC EXCAVATORS

CX210C | CX210C LONG REACH | CX250C | CX250C LONG REACH

TIER  
4i



# CX C-SERIES HYDRAULIC EXCAVATORS

CX210C | CX250C

## Clean power

Case C Series excavators use clean and efficient Tier 4 interim diesel engines.

Equipped with Cooled Exhaust Gas Recirculation (CEGR) and a diesel particulate filter, the engine is capable of meeting emissions regulations without the need for additional diesel exhaust fluids.

Automatic self-regeneration of the Diesel Particulate Diffusor (DPD) ensures no loss of productivity, while low engine rpm, improved hydraulic pump control and five new energy saving systems boost fuel economy by up to 10%.

A green economy gauge can be activated in the cab to inform the operator of the most economical operating mode setting for the machine, reporting fuel consumption in real-time.





# CX C-SERIES HYDRAULIC EXCAVATORS

CX210C | CX250C

## Advanced energy management

Through the use of 5 new fuel saving functions, C series excavators speed up productivity and substantially improve fuel economy. The new systems include:

### Boom Economy Control (BEC)

Increased fuel efficiency during boom lower and swing operations.

### Automatic Economy Control (AEC)

Improved fuel efficiency when servo joysticks are in neutral position and the operator is not calling for power from the machine.

### Swing Relief Control (SWC)

Carefully manages the hydraulic power distribution at slewing operations, to provide the most efficient flow and pressure.

### Spool Stroke Control (SSC)

Creates an automatic pressure adjustment during digging and leveling operations.

It saves fuel, while improving controllability for the operator in fine digging operations.

### Idle functions:

All C-series excavators also feature Auto Idle and Idle Shut Down systems.

When activated, Auto Idle automatically lowers engine revs, whatever the throttle position, when the levers have been inactive for 5 seconds.

Manually, Idle can be activated by a switch on the joystick. Idle shut down, when activated, shuts down the engine when there has been no activity for 3 minutes, resulting in additional fuel savings.





## Increased productivity

As part of the Case Intelligent Hydraulic System all Case C Series excavators benefit from improvements in performance and productivity.

Lifting capacity is increased and cycle times have been cut. Individual operating weights are slightly increased to cope with the additional digging and loading forces, ensuring stable, consistent high production for the customer.

Bucket and boom down regeneration systems feed hydraulic oil back to the supply side of the pump, reducing the requirement for engine power.

The C Series excavators use the familiar working mode control from the B Series machines, making it easy for the operator to become familiar with the new models. The Super Power Mode provides a 5% boost when required for maximum digging ability.

The new monitor in the C Series machines provides operators with the chance to pre-programme auxiliary hydraulic flow and pressure settings (option) for up to 10 attachments, providing rapid changeover and increased productivity.



# CX C-SERIES HYDRAULIC EXCAVATORS

CX210C | CX250C



## Tier 4 interim: lower consumption, top durability

The new Isuzu 4-cylinder engine meets EPA's Tier 4 interim without a need for additional diesel exhaust fluid.

The cooled exhaust gas recirculation (CEGR) in dual layer design effectively reduces NOx while PM is reduced by a diesel particulate filter (DPF) in combination with the variable geometry turbocharger. A diesel oxidation catalyst (DOC) treats carbon monoxide, hydrocarbons and other compounds.

Both components are integrated in the DPD (Diesel Particle Diffusor). Automatic self regeneration speeds your productivity - you can go on working as usual without stopping for the regeneration process of the particle diffusor. Side by side coolers, intercooler and the fuel cooler are now even more efficient thus further increasing our well appreciated durability.

A look under the hood immediately confirms an extremely efficient use of space: the engine, the cooling system and the exhaust system are all designed and grouped so as to take advantage of all the available space, while also granting excellent serviceability and operator visibility.

A ECO gauge can be activated on the new multifunction screen to inform you instantly about the key parameters concerning fuel economy and fuel consumption. Low engine rpm in combination with further improved pump torque control and further 5 new energy saving systems reduces the fuel consumption further by up to 10%.



## First class serviceability

All filters and regular fill points are grouped for easy access, with engine oil change intervals set at 500 hours. A synthetic filter is used for the hydraulic oil, providing 5,000 hour intervals, and all pins and bushes (except the bucket pin) use the Case Extended Maintenance System bushings, allowing greasing intervals of up to 1,000 hours.

The radiator and cooler cores are mounted side by side, to allow easy access for cleaning and more efficient cooling. A 100 litre/min refuelling pump with automatic cut off is provided as standard, reducing downtime for regular fills.

The Japanese-built Case excavators boast an enviable reputation for reliability and durability, which looks set to continue with the new C Series of CX class crawler excavators.

# CX C-SERIES HYDRAULIC EXCAVATORS

CX210C | CX250C

## First class operator environment

The C Series cab is 7% larger than the previous models and uses a smaller top beam and no overlap in the front windows to offer improved all round visibility. Noise levels are reduced to almost automotive standards, around 70dB(A), while the operator has a suspension seat and fully adjustable levers as standard. Travel pedals require less effort, reducing fatigue for the operator.

The ROPS/FOPS level 1 certified cab sits on new suspension mounts. To reduce vibration for the operator and contribute to the lower internal noise levels.

The cab has a powerful air conditioning system with 25% more airflow and an 8% increase in performance.

New mirrors and a standard rear view camera, with optional side camera, improved 178 mm LED monitor inside the cab, providing the operator with a safe and secure working environment.







## Full colour multifunction monitor

The standard 178 mm LED monitor provides all of the information that the operator needs at a glance. Easy to use buttons guide the operator through the screen functions and the monitor can be split to show the standard rear view, and optional side view camera images.

Information includes working mode, travel speed, working lights, attachment choice, time and working hours, along with system data such as coolant and hydraulic oil temperatures, fuel level and the condition of the particulate filter and the auto-regeneration function.

When selected, the ECO gauge displays the function of the various energy saving systems, allowing the operator to maximise efficiency and save fuel.

The monitor can be set to work in one of 20 languages, and is also used by service technicians to access onboard diagnostic functions.



## SiteWatch™



### The Science Bit

The Case SiteWatch telematics system uses a high-tech control unit mounted on each machine to collate information from that machine and from GPS satellites. This data is then sent wirelessly through the mobile communication networks to the Case Telematics Web Portal.



# SiteWatch: Centralised Fleet Control Benefits At Your Fingertips

## Measure your true asset availability and optimise it

- Eliminate the “phantom fleet”: SiteWatch allows to identify spare units or under loaded machines on each site.
- Become able to reallocate units where they are more needed.
- Forward Maintenance Planning is easier since the actualised working hours are always available.
- Extend the benefits of SiteWatch to the rest of your fleet: SiteWatch can be installed on the units of other brands as well.

## Challenge your Total Cost of Ownership!

- Being able to compare the fuel usage of different machine types will allow you choose the right equipment.
- Save on transport costs with planned and grouped maintenance tasks.
- Peace of mind, optimised uptime and lower repair costs: with preventive maintenance you can for example be alerted if the engine needs to be serviced and avoid a disruptive breakdown.
- Be able to compare your asset Return On Investment on different sites.
- Your equipment is used only during working hours. You can set up alerts so that you know if it is in use during the weekend or at night.
- Integrate with the programmed maintenance package, so that you can be sure every machine is at the right place at the right time.

## More Safety, Lower Insurance Premium

- Keep thieves away: dissuade them from attacking your asset because it is geo-localised. SiteWatch is hidden so that thieves can't find it quickly.
- Your fleet is used only where you decide. You can define a virtual fence and receive an email when a machine exits that perimeter.



# CX C-SERIES HYDRAULIC EXCAVATORS

CX210C





# CX C-SERIES HYDRAULIC EXCAVATORS

## CX210C

## Specifications

### Engine

Model \_\_\_\_\_ ISUZU AM-4HK1X  
Type \_\_\_\_\_ Water-cooled, 4-cycle diesel, 4-cylinder in line,  
Electronically controlled, high pressure common rail system, variable  
geometry turbocharger, air cooled intercooler, dual exhaust gas  
recirculation, DPD system with auto-regeneration. Tier 4 interim  
certified.

Number of cylinders/displacement \_\_\_\_\_ 4/5.19 l

Bore/Stroke \_\_\_\_\_ 115 x 125 mm

Horsepower ISO 9249 \_\_\_\_\_ 119 kW/160 hp at 1800 min<sup>-1</sup>

Maximum torque ISO 9249 \_\_\_\_\_ 621 Nm at 1500 min<sup>-1</sup>

### Hydraulic system

Max oil flow \_\_\_\_\_ 2 x 211 l/min @ 1800 min<sup>-1</sup>

2 variable displacement axial piston pumps with regulating system

Working circuit pressure

Boom/Arm/Bucket \_\_\_\_\_ 34.3 MPa

Boom/Arm/Bucket (with auto power up) \_\_\_\_\_ 36.8 MPa

Swing circuit \_\_\_\_\_ 29.4 MPa

Travel \_\_\_\_\_ 34.3 Mpa

### Swing

Maximum swing speed \_\_\_\_\_ 11.5 min<sup>-1</sup>

### Travel

Travel motor \_\_\_\_\_ Variable displacement axial piston motor

Max travel speed \_\_\_\_\_ 5.6 km/h (Automatic travel speed shifting)

Low travel speed \_\_\_\_\_ 3.4 km/h

Gradeability \_\_\_\_\_ 70% (35°)

Drawbar pull \_\_\_\_\_ 188 kN

### Electrical system

Circuit \_\_\_\_\_ 24V

Alternator \_\_\_\_\_ 50 Amp

### Undercarriage

Number of carriers rollers (each side) \_\_\_\_\_ 2

Number of track rollers (each side) \_\_\_\_\_ 8

Number of shoes (each side) \_\_\_\_\_ 49

Type of shoe \_\_\_\_\_ Triple grouser shoe

### Capacities

Fuel tank \_\_\_\_\_ 320 l

Hydraulic system \_\_\_\_\_ 220 l

Cooling system \_\_\_\_\_ 30.8 l

## Weight and ground pressure

With 2.40 m Arm , 1.0 m<sup>3</sup> bucket, operator, lubricant, coolant, full fuel tank and top guard OPG level 2

CX210C	Weight (kg)	Ground pressure (MPa)
500 mm grouser shoe	20.760	0.048
600 mm grouser shoe	21.200	0.044
700 mm grouser shoe	21.640	0.039
800 mm grouser shoe	21.940	0.035

With 2.40 m Arm , 1.0 m<sup>3</sup> bucket, operator, lubricant, coolant, full fuel tank and top guard OPG level 2

CX210C NLC Mono	Weight (kg)	Ground pressure (MPa)
500 mm grouser shoe	21.500	0.053
600 mm grouser shoe	21.940	0.048

With 2.40 m Arm , 1.0 m<sup>3</sup> bucket, operator, lubricant, coolant, full fuel tank and top guard OPG level 2

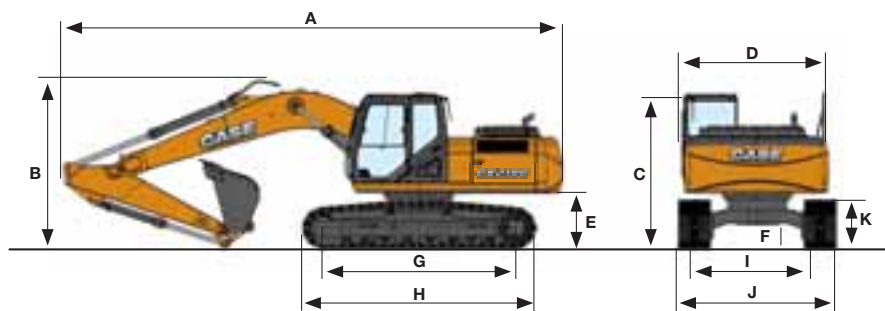
CX210C NLC 2P boom	Weight (kg)	Ground pressure (MPa)
500 mm grouser shoe	23.400	0.058
600 mm grouser shoe	23.840	0.052

With 6.40 m Arm , 0.37 m<sup>3</sup> Bucket, operator, lubricant, coolant, full fuel tank and top guard OPG level 2

CX210C long reach	Weight (kg)	Ground pressure (MPa)
800 mm grouser shoe	23.300	0.036

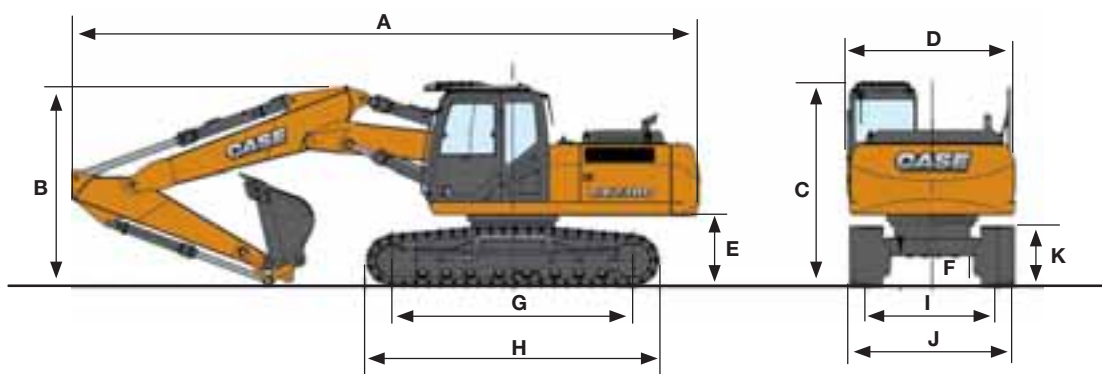
# General dimensions

## Monoboam



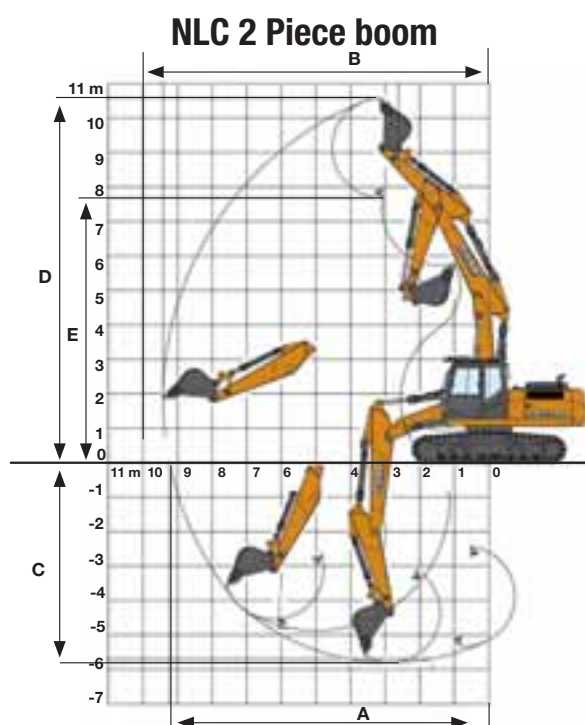
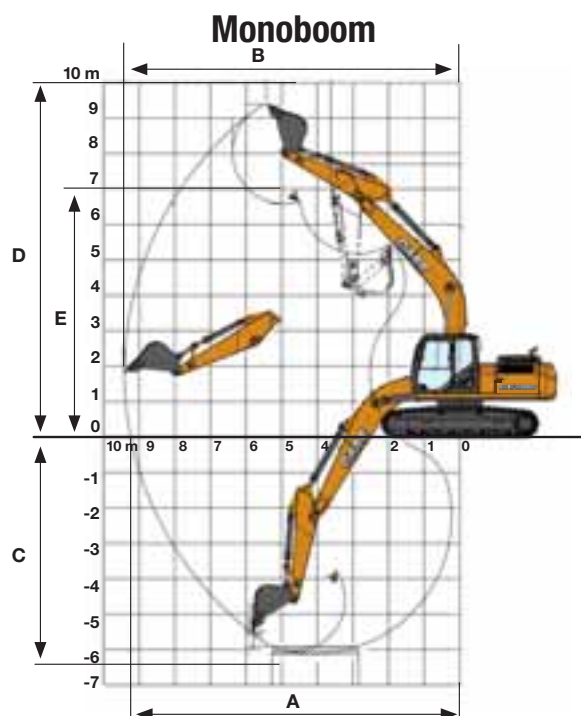
	Arm 2.40 m	Arm HD 1.90 m	Arm 2.94 m
Overall length (without attachment)	4960 mm	4960 mm	4960 mm
A Overall length (with attachment)	9460 mm	9490 mm	9380 mm
B Overall height (with attachment)	3200 mm	3110 mm	3000 mm
C Cab height	3070 mm	3070 mm	3070 mm
D Upper structure overall width	2770 mm	2770 mm	2770 mm
Swing (rear end) radius	2750 mm	2750 mm	2750 mm
E Clearance height under upper structure	1040 mm	1040 mm	1040 mm
F Minimum ground clearance	440 mm	440 mm	440 mm
G Wheel base (Center to center of wheels)	3660 mm	3660 mm	3660 mm
H Crawler overall length	4470 mm	4470 mm	4470 mm
I Track gauge	2390 mm	2390 mm	2390 mm
J Undercarriage overall width (with 500 mm shoes)	2990 mm	2990 mm	2990 mm
I Track gauge NLC	1990 mm	1990 mm	1990 mm
J Undercarriage NLC overall width (with 500 mm shoes)	2490 mm	2490 mm	2490 mm
K Crawler tracks height	920 mm	920 mm	920 mm

## NLC 2 Piece boom



	Arm 1,90 m	Arm 2,40 m	Arm 2,94 m
Overall length (without attachment)	5060 mm	5060 mm	5060 mm
A Overall length (with attachment)	9570 mm	9540 mm	9480 mm
B Overall height (with attachment)	3100 mm	3100 mm	3100 mm
C Cab height	3100 mm	3100 mm	3100 mm
D Upper structure overall width	2540 mm	2540 mm	2540 mm
Swing (rear end) radius	2830 mm	2830 mm	2830 mm
E Clearance height under upper structure	1060 mm	1060 mm	1060 mm
F Minimum ground clearance	430 mm	430 mm	430 mm
G Wheel base (Center to center of wheels)	3660 mm	3660 mm	3600 mm
H Crawler overall length	4470 mm	4470 mm	4470 mm
I Track gauge NLC	1990 mm	1990 mm	1990 mm
J Undercarriage NLC overall width (with 500 mm shoes)	2490 mm	2490 mm	2490 mm
K Crawler tracks height	920 mm	920 mm	920 mm

# Performance data



## Monoboarm

	Arm 2.40 m	Arm HD 1.90 m	Arm 2.94 m
Boom length	5700 mm	5700 mm	5700 mm
Bucket radius	1450 mm	1450 mm	1450 mm
Bucket wrist action	177°	177°	177°
A Maximum reach at GRP	9240 mm	8770 mm	9730 mm
B Maximum reach	9420 mm	8960 mm	9900 mm
C Max. digging depth	6110 mm	5610 mm	6650 mm
D Max. digging height	9390 mm	9140 mm	9610 mm
E Max. dumping height	6590 mm	6330 mm	6810 mm

## NLC 2 Piece boom

	Arm 1,90 m	Arm 2,40 m	Arm 2,94 m
Boom length	5670 mm	5670 mm	5670 mm
Bucket radius	1450 mm	1450 mm	1450 mm
Bucket wrist action	177°	177°	177°
A Maximum reach at GRP	8750 mm	9220 mm	9720 mm
B Maximum reach	8950 mm	9420 mm	9900 mm
C Max. digging depth	5310 mm	5800 mm	6320 mm
D Max. digging height	10210 mm	10580 mm	10940 mm
E Max. dumping height	7320 mm	7680mm	8040 mm

## Digging force

With 1.0 m<sup>3</sup> bucket (ISO 6015)

	Arm 2.40 m	Arm HD 1.90 m	Arm 2.94 m
Arm digging force	123 kN	142 kN	103 kN
- with auto power boost	132 kN	152 kN	110 kN
Bucket digging force	142 kN	142 kN	142 kN
- with auto power boost	152 kN	152 kN	152 kN



# Lifting capacity

Front	REACH												m
	1.5 m	3.0 m	4.5 m	6.0 m	7.5 m	9.0 m	At max reach						

## Standard arm. 2.94 m arm length, 0.90 m<sup>3</sup> bucket, 600G LC shoes, max reach 9.56 m

7.5 m								2890*	2890*				2200*	2200*	7.73
6.0 m								3850*	3500				2090*	2090*	8.69
4.5 m						4670*	4670*	4400*	3390	3100*	2400		2080*	2080*	9.26
3.0 m			10330*	10330*	7550*	7330	5780*	4700	4840*	3250	3650	2340	2140*	2080	9.53
1.5 m			8430*	8430*	9390*	6900	6750*	4430	4830	3090	3570	2260	2280*	2030	9.54
0 m			8180*	8130*	10380*	6510	6720	4210	4700	2970	3510	2210	2530*	2100	9.28
-1.5 m	7390*	7390*	10600*	10600*	10540*	6390	6600	4110	4640	2970			2940*	2300	8.76
-3.0 m	9790*	9790*	14530*	12940	10250*	6460	6630	4140	4710	2920			3700*	2720	7.92
-4.5 m	10770*	13770*	13230*	12980*	9110*	6660	6510*	4350		2980			5240*	3610	6.67

## Short arm. 2.40 m arm length, 1.00 m<sup>3</sup> bucket, 600G LC shoes, max reach 9.08 m

7.5 m							3440*	3440*						3260*	3260*	7.71
6.0 m							4570*	4570*	4230*	3390				3090*	2870	8.14
4.5 m						6220*	6220*	5140*	4840*	4740*	3300			3070*	2440	8.76
3.0 m					8090*	7260	6130*	4580	4910	3160	3500*	2270		3160*	2240	9.05
1.5 m					9650*	6710	6820	4330	4760	3030	3520	2210		3350*	2190	9.05
0 m			7350*	7350*	10510*	6400	6640	4140	4650	2930				3630	2270	8.78
-1.5 m	7900*	7900*	10930*	10930*	10470*	6380	6570	4080	4630	2910				4020	2530	8.23
-3.0 m	11060*	11060*	14460*	13050*	9930*	6490	6650	4170						4860	3070	7.33
-4.5 m		11890*	11890*	8320*	6750									5380	4320	5.96

## SP Short arm. 1.90 m arm length, 1.00 m<sup>3</sup> bucket, 600G LC shoes, max reach 8.62 m

7.5 m							4590*	4590*						4030*	4030*	6.47
6.0 m							4870*	4870*	4580*	3350				3810*	3240	7.62
4.5 m						6930*	6930*	5600*	4800	4970	3280			3790*	2720	8.28
3.0 m					8490*	7130	6510*	4550	4900	3160				3890	2490	8.59
1.5 m					9900*	6650	6840	4320	4780	3050				3830	2430	8.59
0 m					10610*	6430	6670	4170	4690	2970				4010	2540	8.31
-1.5 m			11630*	11630*	10440*	6470	6640	4150	4720	3000				4510	2860	7.72
-3.0 m			13600*	13060	9620*	6610	6720	4290						5590*	3560	6.75
-4.5 m			10500*	10500*	7410*	6790								5720*	5370	5.25

## NLC 2 PIECE BOOM Short arm. 2.40 m arm length, 1.00 m<sup>3</sup> bucket - 700 Kg, LC 500G mm shoes, max reach 9.42 m

9.0 m							3770*	3770*							3800*	3800*	5.34				
7.5 m							3690*	3690*	4570*	4570*					3280*	3230	7.12				
6.0 m							5980*	5980*	4880*	4580*	3940*	2990			3100*	2420	8.16				
4.5 m						9780*	9780*	6940*	6830	5180*	4490	4170*	2980		3070*	2020	8.77				
3.0 m						13470*	13470*	13970*	12160*	9140*	6680	5970*	4460*	4510*	2880	3190*	1860	3040*	1830	9.05	
1.5 m						9860*	9860*	14560*	12000*	10270*	6590	6940*	4140	4930*	2710	3320*	1800	2140*	1770	9.05	
0 m	11340*	11340*	11770*	11770*	16140*	11150	10350*	6010	7150	3840	5000	2540			3380*	1840				8.77	
-1.5 m	14660*	14660*	16700*	16700*	16480*	10560	10470*	5630	7150	3610	4880	2420			3830*	2060				8.21	
-3.0 m	17220*	17220*	24260*	24260*	16290*	10560	10450*	5550	6960	3510					3440*	2540				7.31	
-4.5 m			25970*	25970*	13060*	10840	7490*	5590													

## NLC 2 PIECE BOOM Short arm. 1.91 m arm length, 1.00 m<sup>3</sup> bucket - 700 Kg, LC 500G mm shoes, max reach 8.95 m

9.0 m															4500*	4500*	4.37				
7.5 m							5640*	5640*	4870*	4500					4050*	3800	6.48				
6.0 m							6460*	6460*	5050*	4580	4010*	2870			3730*	2750	7.63				
4.5 m						11410*	11410*	7580*	6870*	550*	4470	4380*	2890		2490*	2270	8.28				
3.0 m						13510*	13510*	14010*	12120	9680*	6660	6350*	4370	4720*	2800			2440*	2050	8.58	
1.5 m							14930*	12010	10390*	6450	7230	4080	5070	2660				3550*	1990	8.58	
0 m			12370*	12370*	16510*	10940	10450*	5930	7370	3820	4980	2520			3840*	2080				8.29	
-1.5 m	15060*	15060*	19540*	19540*	16590*	10570	10630*	5640	7130	3590	4870*	2480			4130*	2360				7.69	
-3.0 m	17500*	17500*	29370*	29370*	15960*	10720	10040*	5610	6100*	3610					3560*	2980				6.71	
-4.5 m					10400*	10400*															

## NLC 2 PIECE BOOM Short arm. 2.94 m arm length, 0.90 m<sup>3</sup> bucket - 650 Kg, LC 500G mm shoes, max reach 9.90 m

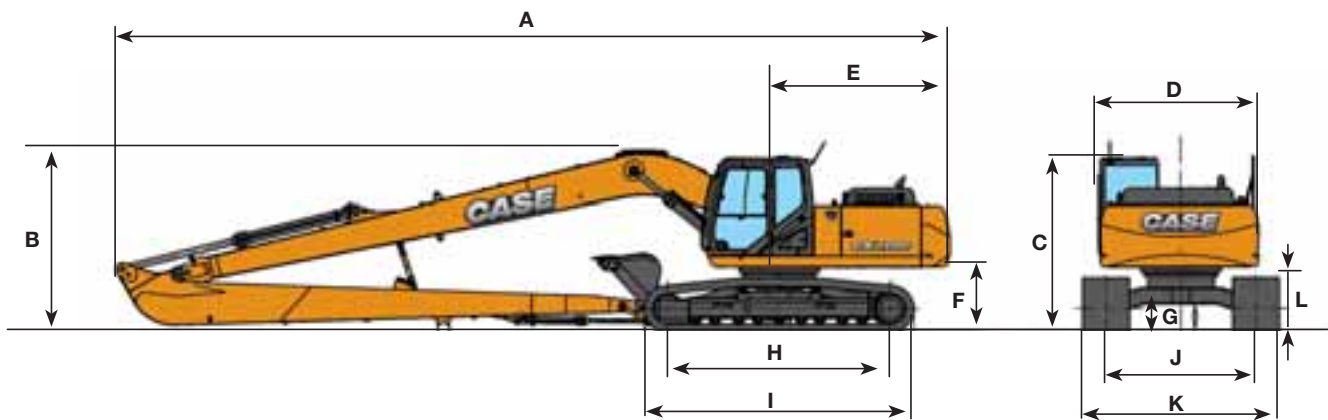
9.0 m							2060*	2060*	3070*	3070*								2520*	2520*	6.21
7.5 m									4150*	4150*	2990*	2990*						2210*	2210*	7.75
6.0 m									4620*	4570	3730*	3150						2090*	2090*	8.7
4.5 m						4380*	4380*	6220*	6220*	4890*	4570	3980*	3130	2980*	2030			2070*	1870	9.27
3.0 m						16810*	16810*	13100*	12380	8220*	6780	5660*	4410	4280*	3030	3390*	1980	2140*	1700	9.54
1.5 m						16860*	16860*	14540*	12030	10200*	6670	6670*	4290	4750*	2860	3610*	1900	2260*	1650	9.53
0 m	9870*	9870*	11860*	11860*	15760*	11580	10370*	6210	7190	3970	5020	2660	3530*	1810			2500*	1700		9.28
-1.5 m	12120*	12120*	14470*	14470*	16400*	10750	10430*	5760	7290	3710	4940	2490					2890*	1870		8.75
-3.0 m	15530*	15530*	19480*	19480*	16500*	10530	10570*	5580	7060	3530	4730*	2470					3560*	2240		7.91
-4.5 m	14980*	14980*	23120*	23120*	15030*	10750	9121*	5610	5160*	3560							3830*	3260		6.22

\* Hydraulic capacity 87%

# CX C-SERIES HYDRAULIC EXCAVATORS

## CX210C LONG REACH

### General dimensions



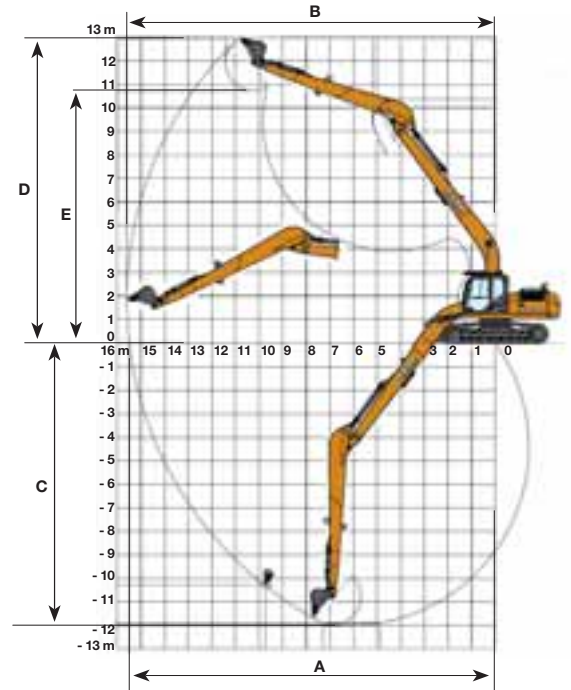
#### Arm 6.40 m

	Overall length (without attachment)	4960 mm
<b>A</b>	Overall length (with attachment)	12470 mm
<b>B</b>	Overall height (with attachment)	3070 mm
<b>C</b>	Cab height	3070 mm
<b>D</b>	Upper structure overall width	2770 mm
<b>E</b>	Swing (rear end radius)	2750 mm
<b>F</b>	Clearance height under upper structure	1040 mm
<b>G</b>	Minimum ground clearance	440 mm
<b>H</b>	Wheel base (Center to center of wheels)	3660 mm
<b>I</b>	Crawler overall length	4470 mm
<b>J</b>	Track gauge	2390 mm
<b>K</b>	Undercarriage overall width (with 800 mm shoes)	3190 mm
<b>L</b>	Crawler tracks height	920 mm

## Performance data

### Arm 6.40 m

<b>Boom length</b>	<b>8700 mm</b>
<b>Bucket radius</b>	<b>1200 mm</b>
<b>Bucket wrist action</b>	<b>178 °</b>
<b>A Maximum reach at GRP</b>	<b>15490 mm</b>
<b>B Maximum reach</b>	<b>15600 mm</b>
<b>C Max. digging depth</b>	<b>12010 mm</b>
<b>D Max. digging height</b>	<b>12970 mm</b>
<b>E Max. dumping height</b>	<b>10730 mm</b>
<b>Arm digging force</b>	<b>46 kN</b>
<b>Bucket digging force</b>	<b>65 kN</b>



## Lifting capacity

Front 360°	REACH											m				
	0.0 m	1.5 m	3.0 m	4.5 m	6.0 m	7.5 m	9.0 m	10.5 m	12.0 m	13.5 m	15.0 m		At max reach			

### Super long arm. 6.40 m arm length, 0.37 m<sup>3</sup> bucket, 800G shoes, max reach 15.60 m

	0.0 m		1.5 m		3.0 m		4.5 m		6.0 m		7.5 m		9.0 m		10.5 m		12.0 m		13.5 m		15.0 m		950°	950°					
<b>12.0 m</b>																													
<b>10.5 m</b>																	1520*	1520*							880*	880*	12.68		
<b>9.0 m</b>																	1690*	1690*	990*	990*					850*	850*	13.61		
<b>7.5 m</b>																	1760*	1760*	1680*	1390					830*	830*	14.31		
<b>6.0 m</b>																	1870*	1870*	1840*	1790	1790*	1360			840*	840*	14.8		
<b>4.5 m</b>																2280*	2280*	2090*	2090*	1970*	1710	1910*	1290	1060*	960	860*	860*	15.13	
<b>3.0 m</b>					5330*	5330*	3470*	3470*	3770*	3770*	3110*	3110*	2680*	2680*	2380*	2090	2160*	1600	2010*	1220	1350*	920			900*	870	15.3		
<b>1.5 m</b>					3100*	3100*	6710*	6710*	4700*	4640	3680*	3390	3060*	2530	2650*	1930	2360*	1490	1970	1150	1460*	880			950*	830	15.31		
<b>0 m</b>			1100*	1100*	2320*	2320*	5800*	5800*	5500*	4200	4190*	3050	3410*	2310	2900	1780	2340	1380	1900	1080	1340*	840			1030*	820	15.17		
<b>-1.5 m</b>	1750*	1750*	1830*	1830*	2700*	2700*	4870*	4870*	6060*	3830	4600*	2800	3540	2130	2790	1650	2250	1300	1840	1030					1140*	830	14.87		
<b>-3.0 m</b>	2310*	2310*	2520*	2520*	3250*	3250*	5000*	5000*	6250	3620	4470	2630	3410	2000	2700	1560	2190	1240	1810	990					1280*	880	14.4		
<b>-4.5 m</b>	2930*	2930*	3190*	3190*	3890*	3890*	550*	5400	6180	3570	4390	2560	3340	1940	2650	1520	2160	1210	1810	990					1490*	960	13.76		
<b>-6.0 m</b>	3470*	3470*	3840*	3840*	4660*	4660*	6400*	5640	6200	3600	4390	2570	3340	1940	2660	1530	2190	1240							1790*	1090	12.91		
<b>-7.5 m</b>	4020*	4020*	4780*	4780*	5790*	5790*	7770*	5810	6110*	3710	4450	2640	3390	2010	2720	1590									2280	1310	11.81		
<b>-9.0 m</b>			5630*	5630*	7140*	7140*	7330*	6070	5560*	3880	4380*	2780	3460	2140												2740*	1690	10.39	
<b>-11.0 m</b>					8280*	8280*	6010*	6010*	4600*	4150	3550*	3030															2829*	2420	8.51

\* Hydraulic capacity 87%

# CX C-SERIES HYDRAULIC EXCAVATORS

CX250C





# CX C-SERIES HYDRAULIC EXCAVATORS

## CX250C

## Specifications

### Engine

Model \_\_\_\_\_ ISUZU AL-4HK1X  
Type \_\_\_\_\_ Water-cooled, 4-cycle diesel, 4-cylinder in line, Electronically controlled, high pressure common rail system, variable geometry turbocharger, air cooled intercooler, dual exhaust gas recirculation, DPD system with auto-regeneration. Tier 4 interim certified.  
Number of cylinders/displacement \_\_\_\_\_ 4/5.19 l  
Bore/Stroke \_\_\_\_\_ 115 x 125 mm  
Horsepower 80/1269/EEC \_\_\_\_\_ 132 kw @ 2000 min<sup>-1</sup>  
Maximum torque 80/1269/EEC \_\_\_\_\_ 621 Nm @ 1800 min<sup>-1</sup>

### Hydraulic system

Max oil flow \_\_\_\_\_ 2 x 234 l/min @ 2000 min<sup>-1</sup>  
2 variable displacement axial piston pumps with regulating system  
Boom/Arm/Bucket \_\_\_\_\_ 36.8 MPa  
Swing circuit \_\_\_\_\_ 27/28.9 MPa  
Travel \_\_\_\_\_ 34.3 MPa

### Swing

Maximum swing speed \_\_\_\_\_ 10.6 rpm

### Travel

Travel motor \_\_\_\_\_ Variable displacement axial piston motor  
Max travel speed \_\_\_\_\_ 5.5 km/h (Automatic travel speed shifting)  
Low travel speed \_\_\_\_\_ 3.5 km/h  
Gradeability \_\_\_\_\_ 70% (35°)  
Drawbar pull \_\_\_\_\_ 201 kN

### Electrical system

Circuit \_\_\_\_\_ 24V  
Alternator \_\_\_\_\_ 50 Amp

### Undercarriage

Number of carriers rollers (each side) \_\_\_\_\_ 2  
Number of track rollers (each side) \_\_\_\_\_ 9  
Number of shoes (each side) \_\_\_\_\_ 51  
Type of shoe \_\_\_\_\_ Triple grouser shoe

### Circuit and component capacities

Fuel tank \_\_\_\_\_ 410 l  
Hydraulic system \_\_\_\_\_ 250 l  
Cooling system \_\_\_\_\_ 30.2 l

## Weight and ground pressure

With 3.00 m Arm, 1.1 m<sup>3</sup> bucket, operator, lubricant, coolant, full fuel tank and top guard OPG level 2

CX250C LC	Weight (kg)	Ground pressure (MPa)
600 mm grouser shoe	24.800	0.049
700 mm grouser shoe	25.100	0.043
800 mm grouser shoe	25.400	0.038
900 mm grouser shoe	25.700	0.034

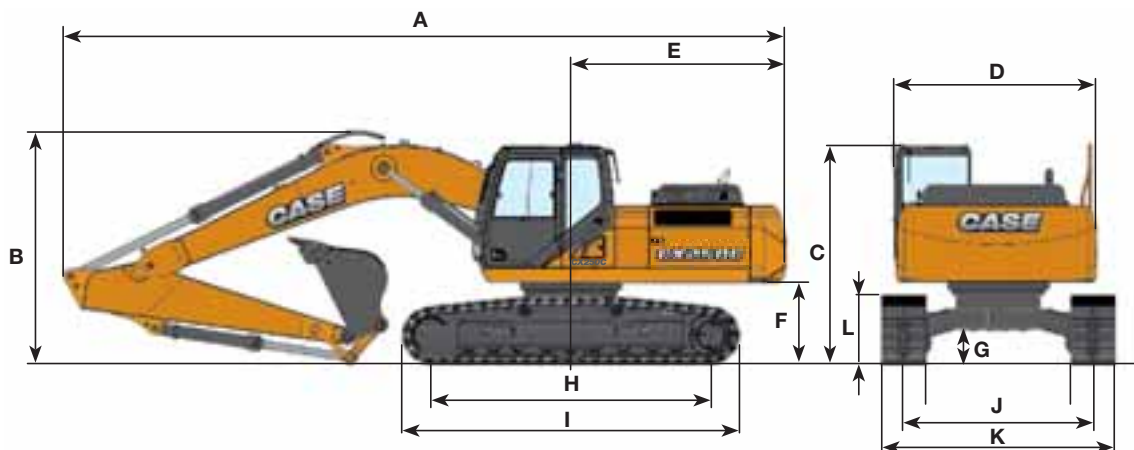
CX250C NLC	Weight (kg)	Ground pressure (MPa)
600 mm grouser shoe	24.700	0.049
700 mm grouser shoe	25.000	0.042

With 8.00 m arm, 0.37m<sup>3</sup> bucket, operator, lubricant, coolant, full fuel tank and top guard OPG level 2

CX250C LC long reach	Weight (kg)	Ground pressure (MPa)
800 mm grouser shoe	28.100	0.042

# General dimensions

With 5.85 m standard boom



## LC / NLC

	Arm 3.00 m	Arm HD 2.50 m	Arm 3.52 m
Overall length (without attachment)	5270 mm	5270 mm	5270 mm
A Overall length (with attachment)	9880 mm	9950 mm	9910 mm
B Overall height (with attachment)	3200 mm	3350 mm	3360 mm
C Cab height	3130 mm	3130 mm	3130 mm
D Upper structure overall width	2770 mm	2770 mm	2770 mm
E Swing (rear end radius)	2950 mm	2950 mm	2950 mm
F Clearance height under upper structure	1100 mm	1100 mm	1100 mm
G Minimum ground clearance	460 mm	460 mm	460 mm
H Wheel base (Center to center of wheels)	3840 mm	3840 mm	3840 mm
I Crawler overall length	4650 mm	4650 mm	4650 mm
L Crawler tracks height	940 mm	940 mm	940 mm

## LC

	Arm 3.00 m	Arm HD 2.50 m	Arm 3.52 m
J Track gauge	2590 mm	2590 mm	2590 mm
K Undercarriage overall width (with 600 mm shoes)	3190 mm	3190 mm	3190 mm

## NLC

	Arm 3.00 m	Arm HD 2.50 m	Arm 3.52 m
J Track gauge	2390 mm	2390 mm	2390 mm
K Undercarriage overall width (with 600 mm shoes)	2990 mm	2990 mm	2990 mm

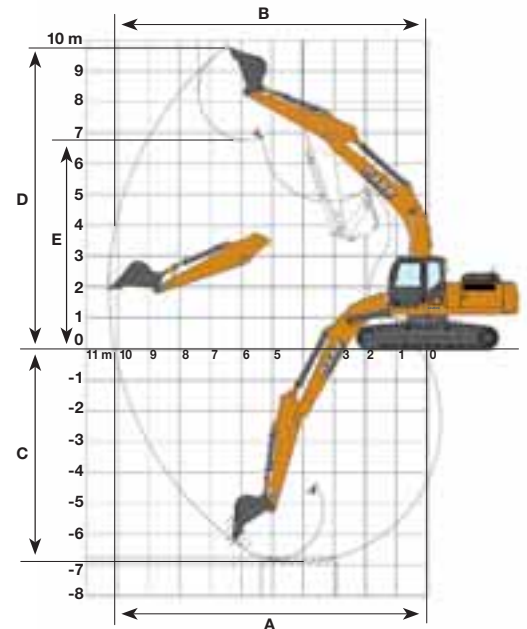
# CX C-SERIES HYDRAULIC EXCAVATORS

CX250C

## Performance data

With 5.85 m standard boom

LC / NLC	Arm 3.00 m	Arm HD 2.50 m	Arm 3.52 m
Boom length	5850 mm	5850 mm	5850 mm
Bucket radius	1570 mm	1570 mm	1570 mm
Bucket wrist action	175°	175°	175°
A Maximum reach at GRP	10100 mm	9630 mm	10620 mm
B Maximum reach	10280 mm	9820 mm	10790 mm
C Max. digging depth	6900 mm	6400 mm	7420 mm
D Max. digging height	9760 mm	9560 mm	10070 mm
E Max. dumping height	6760 mm	6550 mm	7060 mm
Arm digging force	120 kN	141 kN	107 kN
- with auto power up	129 kN	151 kN	115 kN
Bucket digging force	162 kN	162 kN	162 kN
- with auto power up	174 kN	174 kN	174 kN



## Lifting capacity

Front	REACH						
	1.5 m	3.0 m	4.5 m	6.0 m	7.5 m	9.0 m	At max reach

LC - Standard arm. 2.5 m HD arm length, 1.30 m<sup>3</sup> bucket, 600G shoes, max reach 9.46 m

7.5 m								4130*	4130*			3430*	3430*	7.64
6.0 m								5330*	4500			3260*	3260*	8.61
4.5 m				6270*	6270*	6650*	6350	6020*	4360			3240*	2970	9.18
3.0 m			12580*	12580*	10120*	9610	7850*	6060	6350	4180		3320*	2750	9.44
1.5 m					12110*	8920	8850	5720	6180	4010		3500*	2700	9.42
0 m			8500*	8500*	13430*	8510	8640	5470	6030	3870		3820*	2800	9.16
-1.5 m	9640*	9640*	12090*	12090*	13360*	8460	8530	5380	5980	3830		4400*	3090	8.63
-3.0 m	12110*	12110*	17470*	16990	12730*	8580	8600	5460	6100	3950		5440*	3670	7.79
-4.5 m	17470*	17470*	15510*	15510*	10920*	8860	7760*	5740				6440*	4910	6.53

NLC - Standard arm. 2.5 m HD arm length, 1.30 m<sup>3</sup> bucket, 600G shoes, max reach 9.46 m

7.5 m									4130*	4130*			3430*	3430*	7.64
6.0 m									5330*	4120			3260*	3120	8.61
4.5 m					6270*	6270*	6650*	5860	6020*	3990	4350*	2810	3240*	2690	9.18
3.0 m			12590*	12590*	10120*	8750	7850*	5530	6340	3810	4650	2730	3320*	2480*	9.44
1.5 m					12110*	8050	8830	5200	6160	3630	4560	2650	3500*	2430	9.42
0 m			8500*	8500*	13430*	7650	8620	4950	6010	3500	4500	2600	3820*	2520	9.16
-1.5 m	9640*	9640*	12090*	12090*	13360*	7600	8510	4860	5960	3460			4400*	2780	8.63
-3.0 m	12210*	12210*	17470*	15620	12730*	7720	8580	4940	6090	3580			5440*	3320	6.53
-4.5 m	17470*	17470*	15510*	15440	10920*	8010	7760*	5250					6440*	4450	7.18



Front 360°	REACH							m
	1.5 m	3.0 m	4.5 m	6.0 m	7.5 m	9.0 m	At max reach	

**LC - Standard arm. 3.0 m arm length, 1.11 m<sup>3</sup> bucket, 600G shoes, max reach 9.92 m**

7.5 m								4150 *	4150 *	2370 *	2370 *			8.23	
6.0 m								4800 *	4630	2830 *	2830 *	2250 *	2250 *	9.12	
4.5 m						6180 *	6180 *	5640 *	4480	4470 *	3200	2230 *	2230 *	9.66	
3.0 m			13430 *	13430 *	9720 *	9670	7450 *	6220	6280 *	4290	4750	3100	2290 *	2290	9.9
1.5 m			9390 *	9390 *	12020 *	9170	8650 *	5850	6270	4090	4640	3000	2430 *	2430 *	9.89
0 m			9250 *	9250 *	13280 *	8650	8750	5570	6100	3930	4550	2920	2660 *	2610	9.64
-1.5 m	8880 *	8880 *	11800 *	11800 *	13470 *	8490	8580	5420	6000	3850	4146 *	2910	3060 *	2840	9.13
-3.0 m	10960 *	10960 *	15870 *	15870 *	13100 *	8560	8590	5450	6060	3910			3760 *	3300	8.34
-4.5 m	15110 *	15110 *	17030 *	17030 *	11760 *	8780	8560 *	5660					5190 *	4240	7.18
-6.0 m			12270 *	12270 *	8430 *	8430 *							6020 *	6020 *	5.44

**NLC - Standard arm. 3.0 m arm length, 1.11 m<sup>3</sup> bucket, 600G shoes, max reach 9.92 m**

7.5 m								4150 *	4150 *			2370 *	2370 *	8.23	
6.0 m								4800 *	4240	2830 *	2830 *	2250 *	2250 *	9.12	
4.5 m						6180 *	5950 *	5640 *	4100	4470 *	2910	2230 *	2230 *	9.66	
3.0 m			13430 *	13430 *	9720 *	8950	7450 *	5680	6280 *	3910	4730	2810	2290 *	2290 *	9.9
1.5 m			9390 *	9390 *	12020 *	8290	8650 *	5320	6260	3720	4620	2710	2430 *	2270	9.89
0 m			9250 *	9250 *	13280 *	7790	8720	5040	6080	3560	4540	2630	2660 *	2340	9.64
-1.5 m	8880 *	8880 *	11800 *	11800 *	13470 *	7640	8550	4900	5990	3480	1460 *	2630	3060 *	2560	9.13
-3.0 m	10960 *	10960 *	15870 *	14870	13100 *	7700	8570	4930	6040	3540			3760 *	2980	8.34
-4.5 m	15110 *	15110 *	17030 *	15690	11760 *	7920	8560 *	5140					5190 *	3840	7.18
-6.0 m			12270 *	12270 *	8430 *	8070							6020 *	6020 *	5.44

**LC - Standard arm. 3.5 m arm length, 1.00 m<sup>3</sup> bucket, 600G shoes, max reach 10.4 m**

9.0 m								2240 *	2240 *			2120 *	2120 *	7.57	
7.5 m								3300 *	3300 *			1890 *	1890 *	8.85	
6.0 m								4330 *	4330 *	3490 *	3310	1790 *	1790 *	9.68	
4.5 m								5160 *	4540	4290	3230	1770 *	1770 *	10.18	
3.0 m					8770 *	8770 *	6910 *	6300	5870 *	4330	4770	3120	1820 *	1820 *	10.41
1.5 m			13400 *	13400 *	11220 *	9340	8200 *	5920	6300	4110	4640	3000	1920 *	1920 *	10.40
0 m	4270 *	4270 *	9690 *	9690 *	12850 *	8710	8770	5580	6100	3920	4530	2900	2100 *	2100 *	10.16
-1.5 m	7650 *	7650 *	11290 *	11290	13400 *	8340	8540	5380	5960	3800	4470	2840	2400 *	2400 *	9.68
-3.0 m	9810 *	9810 *	14490 *	14490 *	13220 *	8440	8510	5360	5970	3810			2900 *	2900 *	8.94
-4.5 m	14320 *	14320 *	18150 *	17430	12290 *	8610	8580	5500	6060	3960			3860 *	3610	7.86
-6.0 m			14320 *	14320 *	9860	8820	6680	5690					5850 *	5220	6.30

**NLC - Standard arm. 3.5 m arm length, 1.00 m<sup>3</sup> bucket, 600G shoes, max reach 10.4 m**

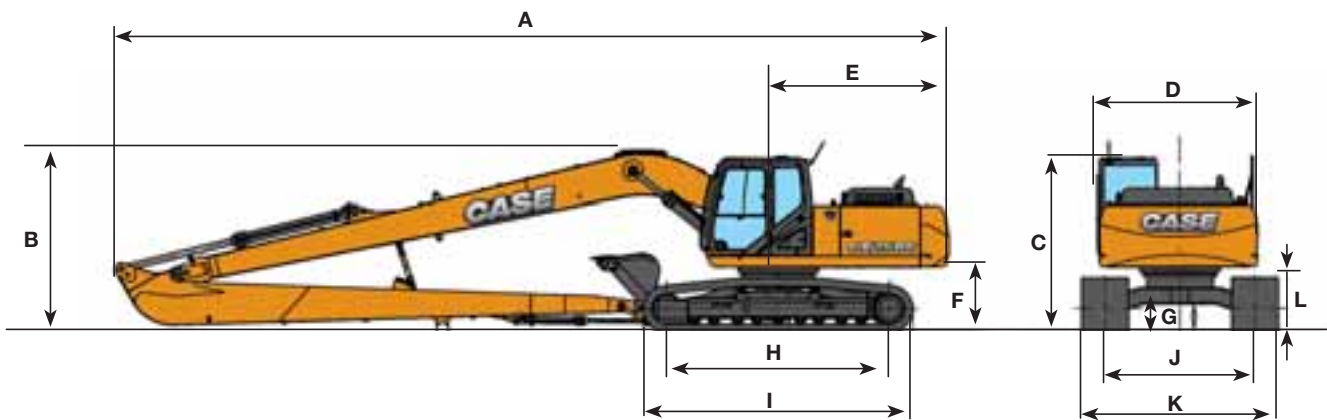
9.0 m								2240 *	2240 *			2120 *	2120 *	7.57	
7.5 m								3300 *	3300 *			1890 *	1890 *	8.85	
6.0 m								4330 *	4250 *	3490 *	3020	1790 *	1790 *	9.68	
4.5 m								5160 *	4160	4290	2950	1770 *	1770 *	10.18	
3.0 m					8770 *	8770 *	6910 *	5780	5870 *	3960	4760	2840	1820 *	1820 *	10.41
1.5 m			13400 *	13400 *	11220 *	8460	8200 *	5390	6290	3740	4630	2720	1920 *	1920 *	10.40
0 m	4270 *	4270 *	9690 *	9690 *	12850 *	7860	8760	5070	6090	3560	4520	2610	2100 *	2100 *	10.16
-1.5 m	7650 *	7650 *	11290 *	11290	13400 *	7580	8530	4860	5960	3440	4460	2560	2400 *	2280	9.68
-3.0 m	9810 *	9810 *	14490 *	14490 *	13220 *	7600	8490	4850	5960	3450			2900 *	2610	8.94
-4.5 m	14320 *	14320 *	18150 *	15540	12290 *	7770	8570	4990	6050	3600			3860 *	3270	7.86
-6.0 m			14320 *	14320 *	9860	8070	6680	5220					5850 *	4740	6.30

\* Hydraulic capacity 87%

# CX C-SERIES HYDRAULIC EXCAVATORS

## CX250C LONG REACH

### General dimensions



#### Arm 8.00 m

	Overall length (without attachment)	5270 mm
A	Overall length (with attachment)	14380 mm
B	Overall height (with attachment)	3130 mm
C	Cab height	3130 mm
D	Upper structure overall width	2770 mm
E	Swing (rear end radius)	2950 mm
F	Clearance height under upper structure	1100 mm
G	Minimum ground clearance	460 mm
H	Wheel base (Center to center of wheels)	3840 mm
I	Crawler overall length	4650 mm
J	Track gauge	2590 mm
K	Undercarriage overall width (with 800 mm shoes)	3390 mm
L	Crawler tracks height	940 mm



## Standard Equipment CX210C

**ENGINE**  
Isuzu 4-cylinder turbodiesel in line  
Certified Tier 4 interim (CEGR)  
Electronic fuel injection  
High pressure common rail system  
Variable geometry turbo charger  
Cooled Exhaust Gas Recirculation (CEGR)  
Diesel Particulate Diffuser (DPD)  
(Diesel Oxidation Catalyst DOC + Diesel Particulate Filter DPF)  
Neutral safety start  
Auto-engine warm up, emergency stop  
Glow-plug pre-heat  
Idle System:  
Auto-idle  
One-touch idle  
Idle shut-down  
EPF (Engine Protection Feature)

Dual-stage fuel filtration  
Dual element air filter  
Remote oil filter  
Green plug oil drain  
500-hour engine oil change interval  
Refuelling Pump  
**HYDRAULICS**  
Auto power boost  
Auto swing priority  
Auto travel speed change  
Selectable work modes  
Overload warning device  
SWC - SWING RELIEF CONTROL  
SSC - SPOOL STROKE CONTROL  
BEC - BOOM ECONOMY CONTROL  
AEC - AUTO ECONOMY CONTROL  
SEC - SWING ECONOMY CONTROL  
ISO pattern controls  
Pre-set auxiliary pump settings

Switch controlled auxiliary selection  
10 x auxiliary flow settings in memory  
Auxiliary valve  
Auxiliary pipe brackets  
5,000 hour hydraulic oil change interval  
1,000 hour hydraulic filter change interval  
Hydraulic track adjustment  
SAHR brake  
**UPPERSTRUCTURE**  
4-point isolation mounted cab (fluid and spring)  
Common key vandal locks  
Swivel guard belly pan  
Rear view safety camera  
**ATTACHMENTS**  
Standard boom 5.70 m

Arm HD 2.40 m  
EMS bushings  
Bucket linkage with hook  
Boom mounted work light (70 watt)  
Auxiliary pipe brackets  
Centralized lube bank  
Attachment cushion valve  
Arm and boom regeneration  
Safety valves on boom and arm cylinders with overload warning device  
**OPERATOR STATION**  
Interior dome light (10W)  
ROPS/FOPS level 1 cab  
FOPS guard OPG level II on cab roof  
Pressurized cab  
Tempered safety glass  
One-touch lock front window  
Sun visor & rain deflector

AC/heat/defrost w/ auto climate control  
Hot & coolbox, cup holder & ashtray  
Interior dome light  
Cloth covered air-suspension seat  
Seat-belt  
Adjustable armrests  
Tilting consoles - 4-position  
Low-effort controls (short)  
Sliding cockpit (180 mm)  
Controls pre-wired for auxiliary  
Auxiliary select system  
Straight travel  
Aux-in port for personal electronics  
Multifunction color monitor  
Rear-view camera  
Anti-theft system (start code system)  
Rubber floor mat

12-volt electric socket  
24-volt cigarette lighter  
One-piece right hand window  
2 internal & 3 external view mirrors  
2 working lights (boom & upperstructure)  
Beacon harness  
2 cab top working lights  
Windshield wiper / washer  
Clear (Lexan) roof window w/ sunshade  
Storage compartments  
On-board diagnostic system  
**UNDERCARRIAGE**  
600 mm steel shoes, triple semigrouser  
Strutted and sealed link  
Full overlap turntable bearing tub  
Single track guide

## Optional Equipment CX210C / CX210C LONG REACH

**HYDRAULICS**  
Auxiliary Hydraulics -  
Single acting breaker circuit  
Multifunction circuit w pressure control  
Low-flow circuit

**ATTACHMENTS**  
Long Reach boom and arm  
Arm - 1.90 m HD / 2.94 m  
Hydr. or mech quickcoupler  
Buckets: Extreme / Heavy duty / GP / ditching

Hammers, shears, grapples  
**OPERATOR STATION**  
Front cab guard - vertical bars (OPG level 2)  
Front cab guard - vertical bars

(OPG level 1)  
Front mesh screen  
AM/FM radio w/ antenna and 2-speakers  
Side-view camera  
**UPPERSTRUCTURE**

Auto centralized greasing system  
Rubber bumper guard (order through Service Parts)  
**UNDERCARRIAGE**  
Steel shoes, triple semi-grouser

700 mm, 800mm  
900 mm steeltracks for swamp only, 600mm rubber link chains  
Triple track guide  
High ambient heat package - 45-50°C (Tropical Package)

## Standard Equipment CX250C

**ENGINE**  
Isuzu 4-cylinder turbodiesel in line  
Certified Tier 4 interim (CEGR)  
Electronic fuel injection  
High pressure common rail system  
Variable geometry turbo charger  
Cooled Exhaust Gas Recirculation (CEGR)  
Diesel Particulate Diffuser (DPD)  
(Diesel Oxidation Catalyst DOC + Diesel Particulate Filter DPF)  
Neutral safety start  
Auto-engine warm up, emergency stop  
Glow-plug pre-heat  
Idle System:  
Auto-idle  
One-touch idle  
Idle shut-down  
EPF (Engine Protection Feature)

Dual-stage fuel filtration  
Dual element air filter  
Remote oil filter  
Green plug oil drain  
500-hour engine oil change interval  
Refuelling Pump  
**HYDRAULICS**  
Auto power boost  
Auto swing priority  
Auto travel speed change  
Selectable work modes  
Overload warning device  
SWC - SWING RELIEF CONTROL  
SSC - SPOOL STROKE CONTROL  
BEC - BOOM ECONOMY CONTROL  
AEC - AUTO ECONOMY CONTROL  
SEC - SWING ECONOMY CONTROL  
ISO pattern controls  
Pre-set auxiliary pump settings

Switch controlled auxiliary selection  
10 x auxiliary flow settings in memory  
Auxiliary valve  
Auxiliary pipe brackets  
5,000 hour hydraulic oil change interval  
1,000 hour hydraulic filter change interval  
Hydraulic track adjustment  
SAHR brake  
**UPPERSTRUCTURE**  
4-point isolation mounted cab (fluid and spring)  
Common key vandal locks  
Swivel guard belly pan  
Rear view safety camera  
**ATTACHMENTS**  
Standard boom 5.85 m  
Arm 3.00 m

EMS bushings  
Bucket linkage with hook  
Boom mounted work light (70 watt)  
Auxiliary pipe brackets  
Centralized lube bank  
Attachment cushion valve  
Arm and boom regeneration  
Safety valves on boom and arm cylinders with overload warning device  
**OPERATOR STATION**  
Interior dome light (10W)  
ROPS/FOPS level 1 cab  
FOPS guard OPG level II on cab roof  
Pressurized cab  
Tempered safety glass  
One-touch lock front window  
Sun visor & rain deflector  
AC/heat/defrost w/ auto climate control

Hot & coolbox, cup holder & ashtray  
Interior dome light  
Cloth covered air-suspension seat  
Seat-belt  
Adjustable armrests  
Tilting consoles - 4-position  
Low-effort controls (short)  
Sliding cockpit (180 mm)  
Controls pre-wired for auxiliary  
Auxiliary select system  
Straight travel  
Aux-in port for personal electronics  
Multifunction color monitor  
Rear-view camera  
Anti-theft system (start code system)  
Rubber floor mat  
12-volt electric socket  
24-volt cigarette lighter  
One-piece right hand window

2 internal & 3 external view mirrors  
2 working lights (boom & upperstructure)  
Beacon harness  
2 cab top working lights  
Windshield wiper / washer  
Clear (Lexan) roof window w/ sunshade  
Storage compartments  
On-board diagnostic system  
**UNDERCARRIAGE**  
600 mm steel shoes, triple semigrouser  
Strutted and sealed link  
Full overlap turntable bearing tub  
Single track guide

## Optional Equipment CX250C / CX250C LONG REACH

**HYDRAULICS**  
Auxiliary Hydraulics -  
Single acting breaker circuit  
Multifunction circuit w pressure control  
Low-flow circuit

**ATTACHMENTS**  
Long Reach boom and arm  
Boom 5.85 m HD  
Arm - 2.50 m / 3.52 m  
Arm Heavy Duty - 2.50 m / 3.00 m

Hydr. or mech quickcoupler  
Buckets: Extreme / Heavy duty / GP / ditching  
Hammers, shears, grapples  
**OPERATOR STATION**  
Front cab guard - vertical bars

(OPG level 2)  
Front cab guard - vertical bars (OPG level 1)  
Front mesh screen  
AM/FM radio w/ antenna and 2-speakers

Side-view camera  
**UPPERSTRUCTURE**  
Auto centralized greasing system  
Rubber bumper guard (order through Service Parts)

**UNDERCARRIAGE**  
Steel shoes, triple semi-grouser  
700 mm  
Steel shoes, triple semi-grouser  
800 mm, 900 mm (LC only)  
Triple track guide

Standard and optional equipment shown can vary by country.

## Worldwide Case Construction Equipment Contact Information

**EUROPE:**  
via Plava, 80  
10135 TORINO - ITALIA

**AFRICA/MIDDLE EAST/CIS:**  
Riva Paradiso 14  
6902 Paradiso - SWITZERLAND

**NORTH AMERICA/MEXICO:**  
700 State Street  
Racine, WI 53404 U.S.A.

**LATIN AMERICA:**  
Av. General David Sarnoff 2237  
32210 - 900 Contagem - MG  
Belo Horizonte BRAZIL

**ASIA PACIFIC:**  
Unit 1 - 1 Foundation Place - Prospect  
New South Wales - 2148 AUSTRALIA

**CHINA:**  
No. 29, Industrial Premises, No. 376.  
De Bao Road, Waigaoqiao Ftz, Pudong,  
SHANGHAI, 200131, P.R.C.

## CASE Construction Equipment

CNH UK Ltd  
Unit 4, Hayfield Lane Business Park,  
Field Lane, Auckley, Doncaster,  
DN9 3FL  
Tel. 00800-2273-7373  
Fax +44 1302 802829



**CASE Customer Assistance**  
00800-2273-7373

The call is free from a land line. Check in advance with your Mobile Operator if you will be charged.



NOTE: Standard and optional fittings can vary according to the demands and specific regulations of each country. The illustrations may include optional rather than standard fittings - consult your Case dealer. Furthermore, CNH Industrial reserves the right to modify machine specifications without incurring any obligation relating to such changes.

Conforms to directive 98/37/CE

